

EVIO Labs Medford (pka Kenevir Research)
 540 East Vilas Road, Suite F, Central Point, OR 97502
 541-668-7444 / OLCC 010-1001626980D / www.EVIOLabs.com

Front Two
The Blue Moon Ranch, LLC
 AG-R1056334IHG



Confident Cannabis ID: 1908KR0111.3488
Sample ID: M191045-01
Matrix: Useable Marijuana
METRC Batch #:
Sampling Method/SOP: SOP.T.20.010
Date Sampled: 08/20/19 09:00
Date Accepted: 08/20/19
Harvest/Process Lot ID:

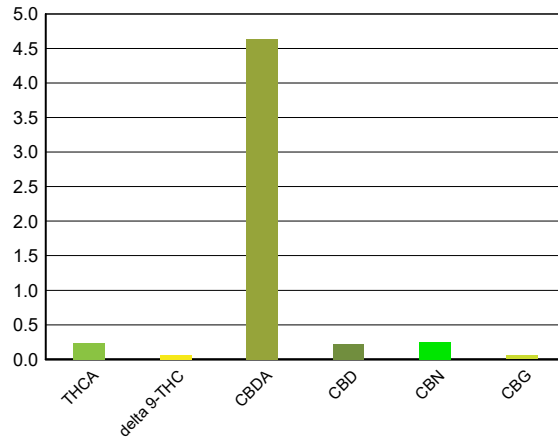
Batch ID:
Batch Size (g):
Unit for Sale:
Harvest/Production Date:

Cannabinoid Analysis

Date/Time Extracted: 08/23/19 11:13
 Date/Time Analyzed: 08/23/19 21:12

Analysis Method/SOP: SOP.T.40.020

Cannabinoids	LOQ(%)	mg/g	% weight	Cannabinoid Profile	
Total THC ((THCA*0.877)+Δ9THC)		2.68	0.268		
Total CBD ((CBDA*0.877)+CBD)		42.8	4.28		
THCA	0.050	2.39	0.239	0.239	
delta 9-THC	0.050	0.58	0.058	0.058	
delta 8-THC	0.050	< LOQ	< LOQ		
CBDA	0.050	46.3	4.63	4.63	
CBD	0.050	2.22	0.222	0.222	
CBN	0.050	2.48	0.248	0.248	
CBG	0.050	0.55	0.055	0.055	
CBC	0.050	< LOQ	< LOQ		
Sum of tested Cannabinoids	0.050	54.5	5.45		



"Total THC" and "Total CBD" are calculated values and are an Oregon reporting requirement (OAR 333-064-0100). For Cannabinoid analysis, only delta 9-THC, THCA, CBD, CBDA are ORELAP accredited analytes. Cannabinoid values reported for plant matter are dry weight corrected; Oregon Water Activity action level is 0.65Aw and Oregon Moisture Content action level is 15%. Samples above limit will be highlighted RED; FD = Field Duplicate; LOQ = Limit of Quantitation.

Stephanie Moon
 Laboratory Director - 8/26/2019

EVIO Labs Medford (pka Kenevir Research)
540 East Vilas Road, Suite F, Central Point, OR 97502
541-668-7444 / OLCC 010-1001626980D / www.EVIOLabs.com

Quality Control

Batch: M19H125 - ODA Exhibit B/ SOP.T.30.050 Prep for Cannabinoids

Blank(M19H125-BLK1)			Extracted: 08/23/19 11:13		Analyzed: 08/23/19 17:43		
Analyte	Result	LOQ	Recovery Limits	Analyte	Result	LOQ	Recovery Limits
THCA	< LOQ	0.100 (%)	< LOQ	delta 9-THC	< LOQ	0.100 (%)	< LOQ
delta 8-THC	< LOQ	0.100 (%)	< LOQ	CBDA	< LOQ	0.100 (%)	< LOQ
CBD	< LOQ	0.100 (%)	< LOQ	CBG	< LOQ	0.100 (%)	< LOQ
CBN	< LOQ	0.100 (%)	< LOQ	CBC	< LOQ	0.100 (%)	< LOQ
Sum of tested Cannabinoid:	< LOQ	0.100 (%)	< LOQ				

LCS(M19H125-BS1)			Extracted: 08/23/19 11:13		Analyzed: 08/23/19 18:01		
Analyte	% Recovery	LOQ	Recovery Limits	Analyte	% Recovery	LOQ	Recovery Limits
THCA	103	(%)	70-130	delta 9-THC	99.2	(%)	70-130
CBDA	107	(%)	70-130	CBD	100	(%)	70-130



Stephanie Moon
 Laboratory Director - 8/26/2019